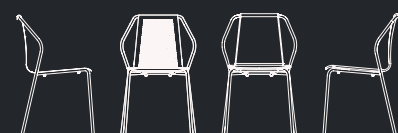


BALERI ITALIA

**Product fact sheet
Scheda prodotto**

**DONNA
IR101/3**

Studio Irvine
2019



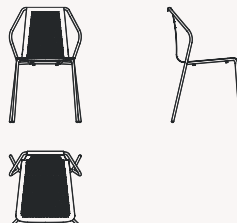
DONNA IR101

Marialaura Irvine
2019



Characteristics/Caratteristiche

- Recyclable/Riciclabile
- Disassemblable/Disassemblabile
- Stackable/Impilabile
- Outdoor use/Usò esterno



Dimensions

Length: 50 cm
Depth: 50 cm
Height: 80 cm
Seat h.: 45 cm
Seat d.: 40 cm

Dimensioni

Lunghezza: 50 cm
Profondità: 50 cm
Altezza: 80 cm
Alt. seduta: 45 cm
Prof. seduta: 40 cm

Product description

Stackable chair

How to use

Indoor/Outdoor

Materials

- Structure in stainless steel tube
- Seat in stainless steel sheet
- Feet in plastic

Technical description

Stackable chair with tubular AISI 304 stainless steel structure, seat and back in perforated AISI 304 stainless steel sheet, painted with epoxy powders in the specified colours.

Finishes

Visible at the bottom of the document

Packaging

H: 91 cm
L: 62 cm
D: 57 cm

Package q.ty

1 pc.

Weight

Product: 4,5 kg
Incl. packaging: 10 kg (2 pcs.)

Packaging pcs.

2 pcs.

Country of origin

Italy

Maintenance

Please download our [Material Care & Cleaning](#) instruction

Descrizione prodotto

Sedia impilabile

Modo d'uso

Indoor/Outdoor

Materiali

- Struttura in tubo d'acciaio inox
- Seduta in lamiera in acciaio inox
- Piedini in plastica

Descrizione tecnica

Sedia impilabile con struttura in tubolare di acciaio inox AISI 304, sedile e schienale in lamiera traforata in acciaio inox AISI 304, verniciata con polveri epossidiche nei colori indicati.

Finiture

Visibili in fondo al documento

Imballaggio

A: 91 cm
L: 62 cm
P: 57 cm

Q.tà colli

1 pz.

Peso

Prodotto: 4,5 kg
Incl. imballo: 10 kg (2 pz.)

Pz. per imballo

2 pz.

Paese di origine

Italia

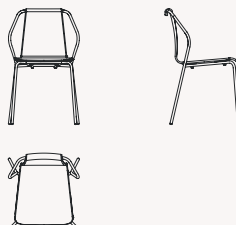
Manutenzione

Scarica le nostre istruzioni per [la cura e la pulizia dei materiali](#)



DONNA IR103

Marialaura Irvine
2019



Dimensions

Length: 50 cm
Depth: 50 cm
Height: 81 cm
Seat h.: 47 cm
Seat d.: 40 cm

Dimensioni

Lunghezza: 50 cm
Profondità: 50 cm
Altezza: 81 cm
Alt. seduta: 47 cm
Prof. seduta: 40 cm

Product description

Upholstered chair

How to use

Indoor

Materials

- Structure in stainless steel tube
- Seat in stainless steel sheet
- Feet in plastic

Technical description

Upholstered chair with tubular steel structure and seat/backrest made of flexible polyurethane foam on both sides. Structure painted with epoxy powders in the specified colours. Non-removable cover in fabric, technical fabric, leather, eco-leather, customer leather (pc) or customer fabric (tc).

Finishes

Visible at the bottom of the document

Packaging

H: 87 cm
L: 55 cm
D: 54 cm

Package q.ty

1 pc.

Weight

Product: 11 kg
Incl. packaging: 12 kg

Packaging pcs.

1 pc.

Country of origin

Italy

Maintenance

Please download our [Material Care & Cleaning](#) instruction

Descrizione prodotto

Sedia rivestita

Modo d'uso

Indoor

Materiali

- Struttura in tubo d'acciaio inox
- Seduta in lamiera in acciaio inox
- Piedini in plastica

Descrizione tecnica

Sedia imbottita con struttura in tubolare di acciaio e sedile/schiena in poliuretano espanso flessibile su entrambi i lati. Struttura verniciata con polveri epossidiche nei colori indicati. Rivestimento non sfoderabile, in tessuto, tessuto tecnico, pelle, eco-pelle, pelle cliente (pc) o tessuto cliente (tc).

Finiture

Visibili in fondo al documento

Imballaggio

A: 87 cm
L: 55 cm
P: 54 cm

Q.tà colli

1 pz.

Peso

Prodotto: 11 kg
Incl. imballo: 12 kg

Pz. per imballo

1 pz.

Paese di origine

Italia

Manutenzione

Scarica le nostre istruzioni per [la cura e la pulizia dei materiali](#)



Structure/Struttura

Finishes/Finiture

AM - Metallic finish/Finitura metallica

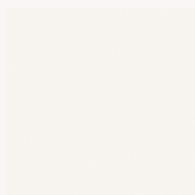
N - Matt finish/Finitura opaca

W, GN, OW, RR, VO, GB - Glossy finish/Finitura lucida



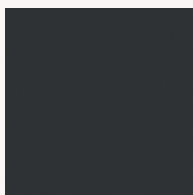
AM

Ral 9006



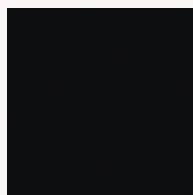
W

Ral 9010



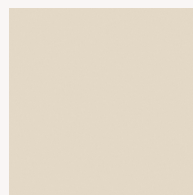
GN

Ral 7021



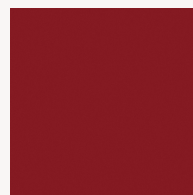
N

Ral 9005



OW

Ral 1013



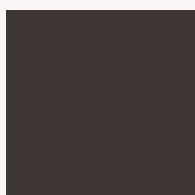
RR

Ral 3003



VO

Ral 6003



GB

Ral 9018

